

Specimen

THE THE THE THE THE THE THE THE THE
 THE THE THE THE THE THE THE THE THE
 THE THE THE THE THE THE THE THE THE

THE THE THE THE THE THE THE THE THE
 THE THE THE THE THE THE THE THE THE
 THE THE THE THE THE THE THE THE THE

THE THE THE THE THE THE THE THE THE
 THE THE THE THE THE THE THE THE THE
 THE THE THE THE THE THE THE THE THE

Content	page
Family overview	→ 02
Text samples	→ 03
OpenType features	→ 30
Glyphset	→ 33
Information	→ 36

Roman

LIMERICK CLOVER

LIMERICK MOSAIC

LIMERICK STAR

LIMERICK LOZENGE

LIMERICK OCTOGONE

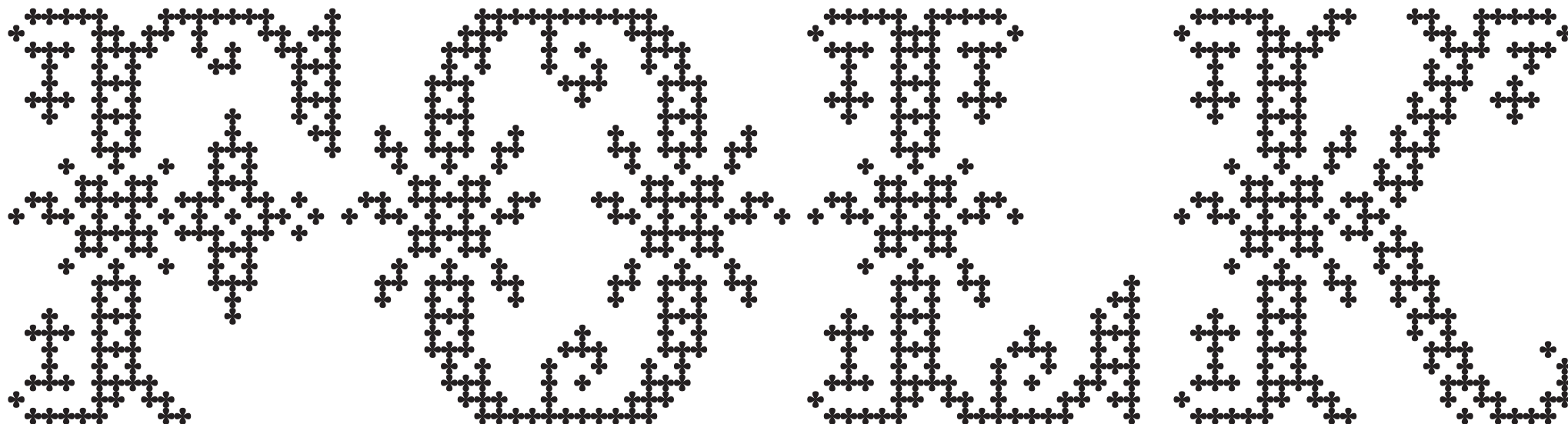
LIMERICK SQUARE

LIMERICK CIRCLE

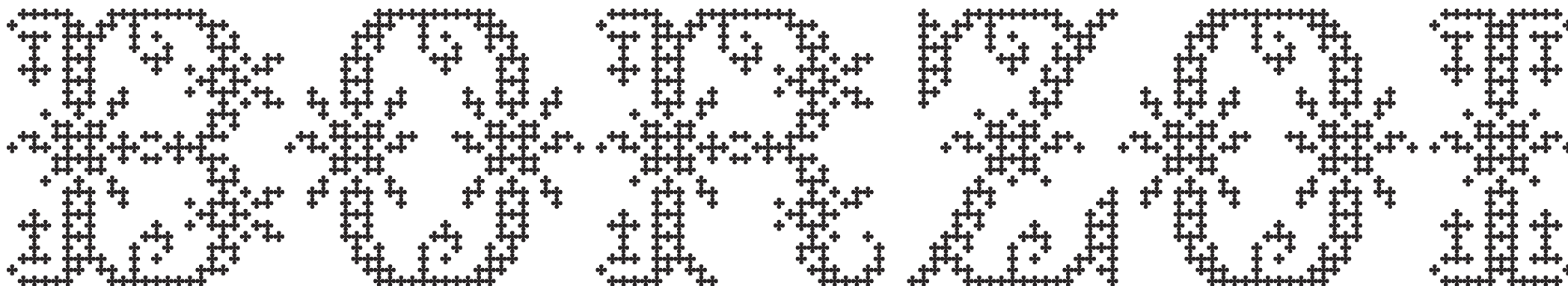
LIMERICK FLOWER

Text samples

Limerick Clover | 300 pt



Limerick Clover | 206 pt



Limerick Clover | 120 pt

WEDNESDAY
WEDNESDAY
WEDNESDAY
WEDNESDAY
WEDNESDAY
WEDNESDAY
WEDNESDAY

WEDNESDAY
WEDNESDAY
WEDNESDAY
WEDNESDAY
WEDNESDAY
WEDNESDAY
WEDNESDAY
WEDNESDAY

Limerick Clover | 60 pt

WEDNESDAY
WEDNESDAY
WEDNESDAY
WEDNESDAY
WEDNESDAY

WEDNESDAY
WEDNESDAY
WEDNESDAY
WEDNESDAY
WEDNESDAY

WEDNESDAY
WEDNESDAY
WEDNESDAY
WEDNESDAY
WEDNESDAY

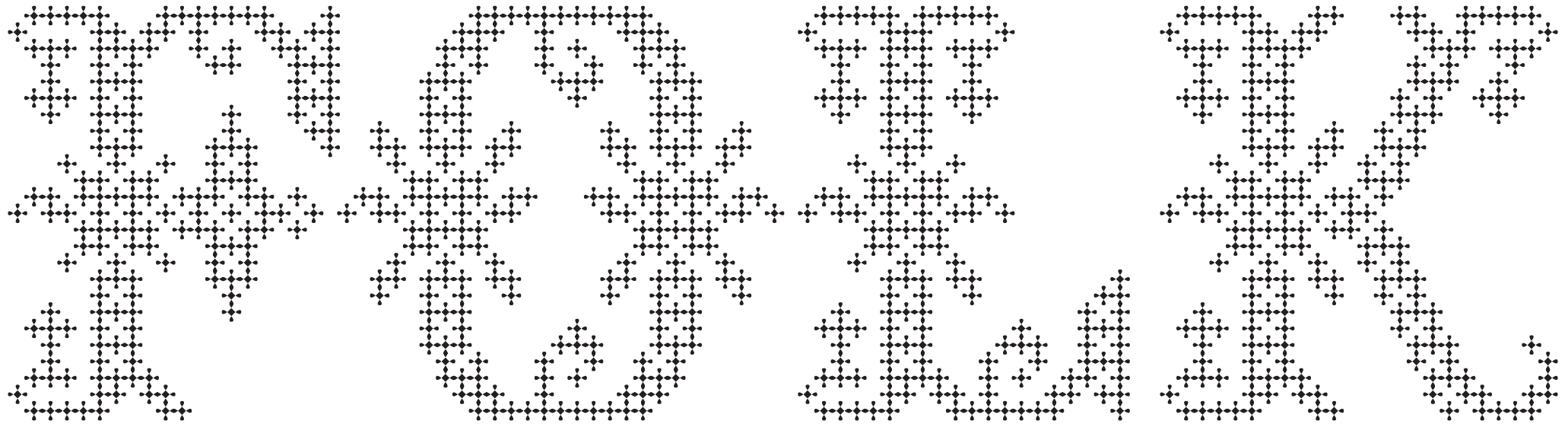
WEDNESDAY
WEDNESDAY
WEDNESDAY
WEDNESDAY
WEDNESDAY

THE LARGEST BIRD
 IN THE UNITED STA
 TES IS THE CALIFO
 RNIA VULTURE, OR
 CONDOR, WHICH ME
 ASURES FROM TIP T
 O TIP OF ITS WINGS
 NINE FEET AND A H
 ALF. AT THE OTHER
 END OF THE SCALE
 ARE THE HUMMING
 BIRD, ONE KIND OF
 WHICH, HAS WINGS
 THAT ARE LESS TH

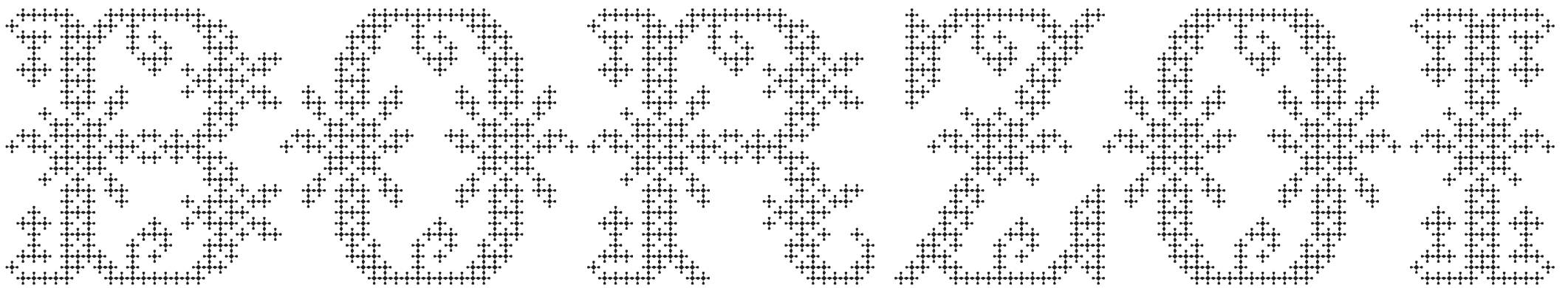
A WEBSITE CAN DEMAND
 A POW TOKEN IN EXCHAN
 GE FOR SERVICE. REQUER
 ING A POW TOKEN FROM
 USERS WOULD INHIBIT F
 RIVOLOUS OR EXCESSIVE
 USE OF THE SERVICE, SPA
 RING THE SERVICE'S UN

THE STANDARD OF LENGTH WHICH HAD GENERALL
 Y BEEN ACCEPTED AS THE STANDARD, WAS A BRAS
 S SCALE 82 INCHES LONG, PREPARED BY TROUGHT
 ON FOR THE COAST SURVEY OF THE UNITED STATE
 S. THE YARD USED WAS THE 36 INCHES BETWEEN T
 HE 27TH AND 63D INCH OF THE SCALE. IN 1856, HO
 WEVER "BRONZE N° 11" WAS PRESENTED TO THE U
 NITED STATES BY THE BRITISH GOVERNMENT. THIS
 IS A DUPLICATE OF THE NO. 1 BRONZE MENTIONED
 BEFORE, WHICH IS THE LEGALIZED STANDARD YAR
 D IN ENGLAND. IT IS STANDARD LENGTH AT 61.79 D
 EGREES F., AND IS THE ACCEPTED STANDARD IN TH
 E UNITED STATES. A BAR OF LOW MOOR IRON, NO. 5
 7, WAS SENT AT THE SAME TIME, AND THIS IS CORR
 ECT IN LENGTH AT 62.58 DEGREES F. THE EXPANSIO
 N OF BRONZE NO. 11 IS 0.000342 INCH, AND THAT O

Limerick Mosaic | 300 pt



Limerick Mosaic | 206 pt



Limerick Mosaic | 120 pt

W E S E E F L A T A T A N Y

P O I N T F I L L E D W I T H
M A T T E R T H E R E E X I S T S
A P R E F E R R E D S T A T E O F

Limerick Mosaic | 60 pt

W E S E E F L A T A T A N Y

P O I N T F I L L E D W I T H

M A T T E R T H E R E E X I S T S

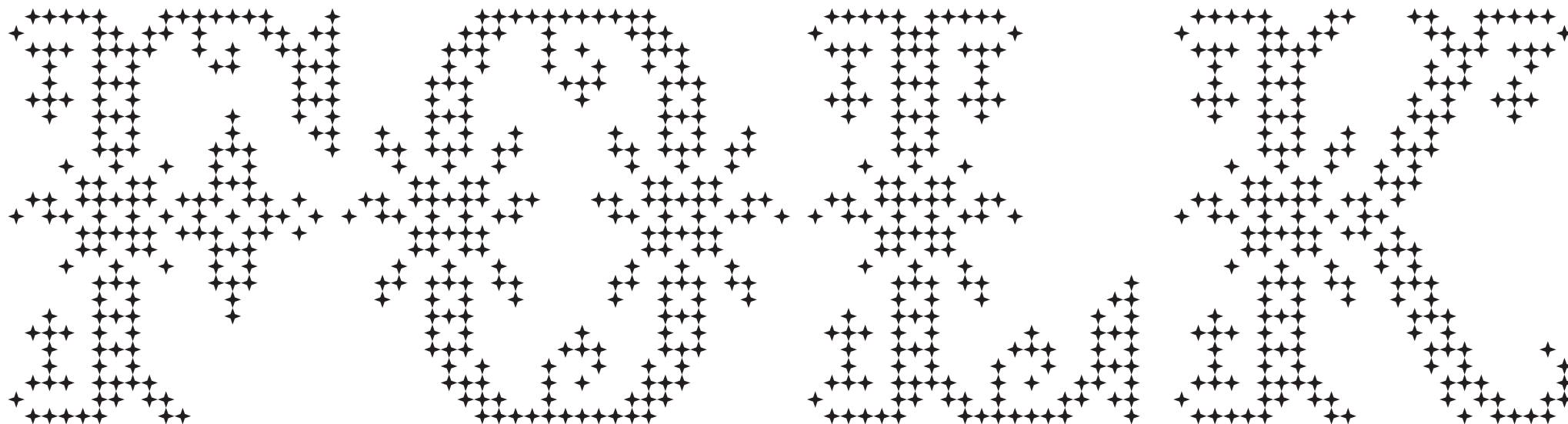
A P R E F E R R E D S T A T E O F

THE LARGEST BIRD
 IN THE UNITED STA
 TES IS THE CALIFO
 RNIA VULTURE, OR
 CONDOR, WHICH ME
 ASURES FROM TIP T
 O TIP OF ITS WINGS
 NINE FEET AND A H
 ALF. AT THE OTHER
 END OF THE SCALE
 ARE THE HUMMING
 BIRD, ONE KIND OF
 WHICH, HAS WINGS
 THAT ARE LONGER

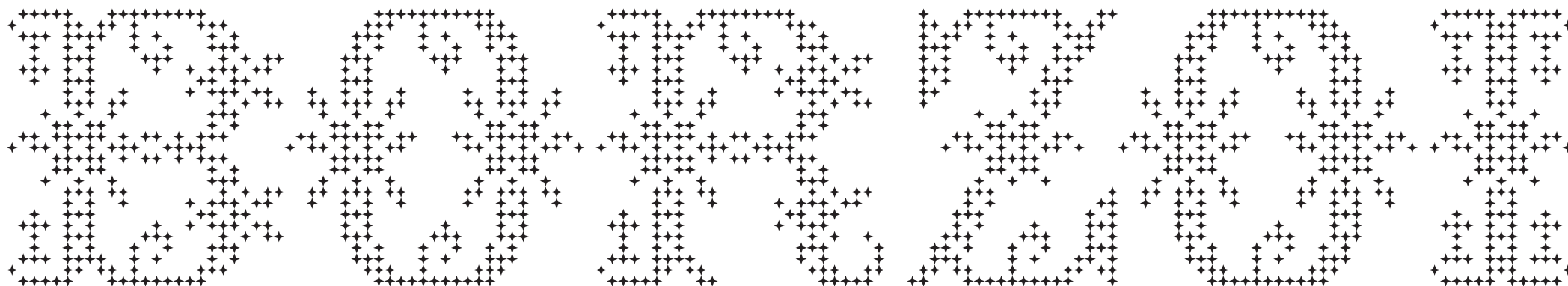
A WEBSITE CAN DEMAND
 A POW TOKEN IN EXCHAN
 GE FOR SERVICE. REQUIR
 ING A POW TOKEN FROM
 USERS WOULD INHIBIT F
 RIVOLOUS OR EXCESSIVE
 USE OF THE SERVICE, SPA
 RING THE SERVICE'S UN

THE STANDARD OF LENGTH WHICH HAD GENERALL
 Y BEEN ACCEPTED AS THE STANDARD, WAS A BRAS
 S SCALE 32 INCHES LONG, PREPARED BY TROUGHT
 ON FOR THE COAST SURVEY OF THE UNITED STATE
 S. THE YARD USED WAS THE 36 INCHES BETWEEN T
 HE 27TH AND 63D INCH OF THE SCALE. IN 1856, HO
 WEVER "BRONZE N° 11" WAS PRESENTED TO THE U
 NITED STATES BY THE BRITISH GOVERNMENT. THIS
 IS A DUPLICATE OF THE NO. 1 BRONZE MENTIONED
 BEFORE, WHICH IS THE LEGALIZED STANDARD YAR
 D IN ENGLAND. IT IS STANDARD LENGTH AT 61.79 D
 EGREES F., AND IS THE ACCEPTED STANDARD IN TH
 E UNITED STATES. A BAR OF LOW MOOR IRON, NO. 5
 7, WAS SENT AT THE SAME TIME, AND THIS IS CORR
 ECT IN LENGTH AT 62.58 DEGREES F. THE EXPANSIO
 N OF BRONZE NO. 11 IS 0.000342 INCH, AND THAT O

Limerick Star | 300 pt



Limerick Star | 206 pt



Limerick Star | 120 pt

W H I S T L E S
S W I M M I N G
I N T H E S E A
A R E T H E
L I M E R I C K
S T A R S

W H I S T L E S
S W I M M I N G
I N T H E S E A
A R E T H E
L I M E R I C K
S T A R S

Limerick Star | 60 pt

W H I S T L E S
S W I M M I N G
I N T H E S E A
A R E T H E
L I M E R I C K
S T A R S

W H I S T L E S
S W I M M I N G
I N T H E S E A
A R E T H E
L I M E R I C K
S T A R S

W H I S T L E S
S W I M M I N G
I N T H E S E A
A R E T H E
L I M E R I C K
S T A R S

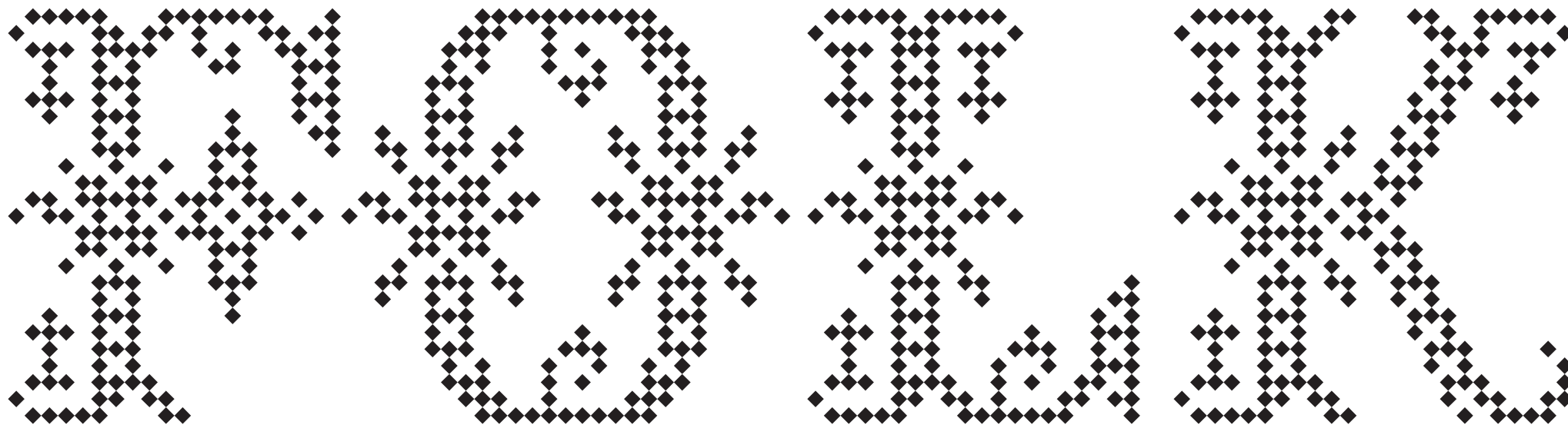
W H I S T L E S
S W I M M I N G
I N T H E S E A
A R E T H E
L I M E R I C K
S T A R S

THE LARGEST BIRD
 IN THE UNITED STA
 TES IS THE CALIFO
 RNIA VULTURE, OR
 CONDOR, WHICH ME
 ASURES FROM TIP T
 O TIP OF ITS WINGS
 NINE FEET AND A H
 ALF. AT THE OTHER
 END OF THE SCALE
 ARE THE HUMMING
 BIRD, ONE KIND OF
 WHICH, HAS WINGS
 THAT ARE LESS TH

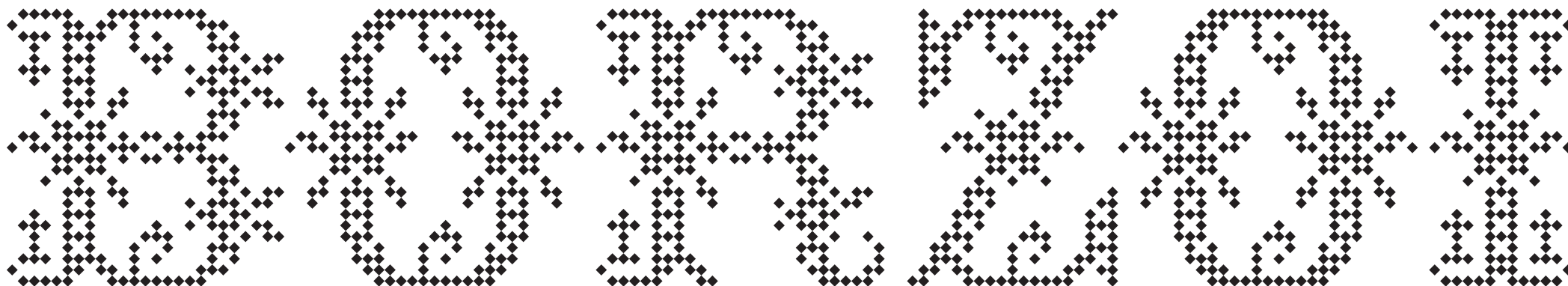
A WEBSITE CAN DEMAND
 A POW TOKEN IN EXCHAN
 GE FOR SERVICE. REQUIR
 ING A POW TOKEN FROM
 USERS WOULD INHIBIT F
 RIVOLOUS OR EXCESSIVE
 USE OF THE SERVICE, SPA
 RING THE SERVICE'S UN

THE STANDARD OF LENGTH WHICH HAD GENERALL
 Y BEEN ACCEPTED AS THE STANDARD, WAS A BRAS
 S SCALE 82 INCHES LONG, PREPARED BY TROUGHT
 ON FOR THE COAST SURVEY OF THE UNITED STATE
 S. THE YARD USED WAS THE 36 INCHES BETWEEN T
 HE 27TH AND 63D INCH OF THE SCALE. IN 1856, HO
 WEVER "BRONZE N° 11" WAS PRESENTED TO THE U
 NITED STATES BY THE BRITISH GOVERNMENT. THIS
 IS A DUPLICATE OF THE NO. 1 BRONZE MENTIONED
 BEFORE, WHICH IS THE LEGALIZED STANDARD YAR
 D IN ENGLAND. IT IS STANDARD LENGTH AT 61.79 D
 EGREES F., AND IS THE ACCEPTED STANDARD IN TH
 E UNITED STATES. A BAR OF LOW MOOR IRON, NO. 5
 7, WAS SENT AT THE SAME TIME, AND THIS IS CORR
 ECT IN LENGTH AT 62.58 DEGREES F. THE EXPANSIO
 N OF BRONZE NO. 11 IS 0.000342 INCH, AND THAT O

Limerick Lozenges | 300 pt



Limerick Lozenges | 206 pt



Limerick Lozenge | 120 pt

W H I T E W H I T E W H I T E W H I T E W H I T E W H I T E W H I T E W H I T E

W H I T E W H I T E W H I T E W H I T E W H I T E W H I T E W H I T E W H I T E W H I T E

Limerick Lozenge | 60 pt

W H I T E W H I T E W H I T E W H I T E W H I T E W H I T E W H I T E W H I T E

W H I T E W H I T E W H I T E W H I T E W H I T E W H I T E W H I T E W H I T E

W H I T E W H I T E W H I T E W H I T E W H I T E W H I T E W H I T E W H I T E

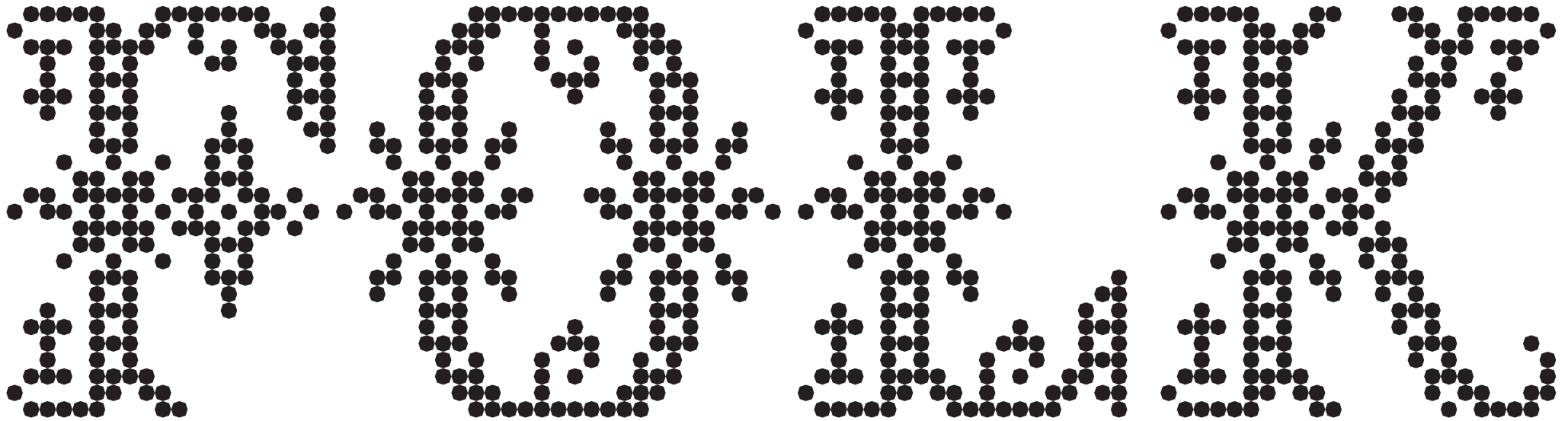
W H I T E W H I T E W H I T E W H I T E W H I T E W H I T E W H I T E W H I T E

THE LARGEST BIRD
 IN THE UNITED STA
 TES IS THE CALIFO
 RNIA VULTURE, OR
 CONDOR, WHICH ME
 ASURES FROM TIP T
 O TIP OF ITS WINGS
 NINE FEET AND A H
 ALF. AT THE OTHER
 END OF THE SCALE
 ARE THE HUMMING
 BIRD, ONE KIND OF
 WHICH, HAS WINGS
 THAT ARE LESS TH

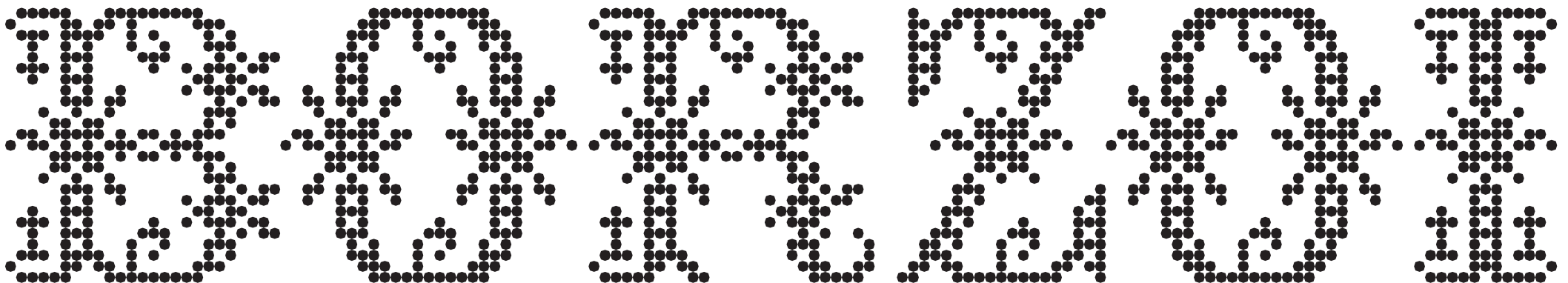
A WEBSITE CAN DEMAND
 A POW TOKEN IN EXCHAN
 GE FOR SERVICE. REQUER
 ING A POW TOKEN FROM
 USERS WOULD INHIBIT F
 RIVOLOUS OR EXCESSIVE
 USE OF THE SERVICE, SPA
 RING THE SERVICE'S UN

THE STANDARD OF LENGTH WHICH HAD GENERALL
 Y BEEN ACCEPTED AS THE STANDARD, WAS A BRAS
 S SCALE 82 INCHES LONG, PREPARED BY TROUGHT
 ON FOR THE COAST SURVEY OF THE UNITED STATE
 S. THE YARD USED WAS THE 36 INCHES BETWEEN T
 HE 27TH AND 63D INCH OF THE SCALE. IN 1856, HO
 WEVER "BRONZE N° 11" WAS PRESENTED TO THE U
 NITED STATES BY THE BRITISH GOVERNMENT. THIS
 IS A DUPLICATE OF THE NO. 1 BRONZE MENTIONED
 BEFORE, WHICH IS THE LEGALIZED STANDARD YAR
 D IN ENGLAND. IT IS STANDARD LENGTH AT 61.79 D
 EGREES F., AND IS THE ACCEPTED STANDARD IN TH
 E UNITED STATES. A BAR OF LOW MOOR IRON, NO. 5
 7, WAS SENT AT THE SAME TIME, AND THIS IS CORR
 ECT IN LENGTH AT 62.58 DEGREES F. THE EXPANSIO
 N OF BRONZE NO. 11 IS 0.000342 INCH, AND THAT O

Limerick Octogone | 300 pt



Limerick Octogone | 206 pt

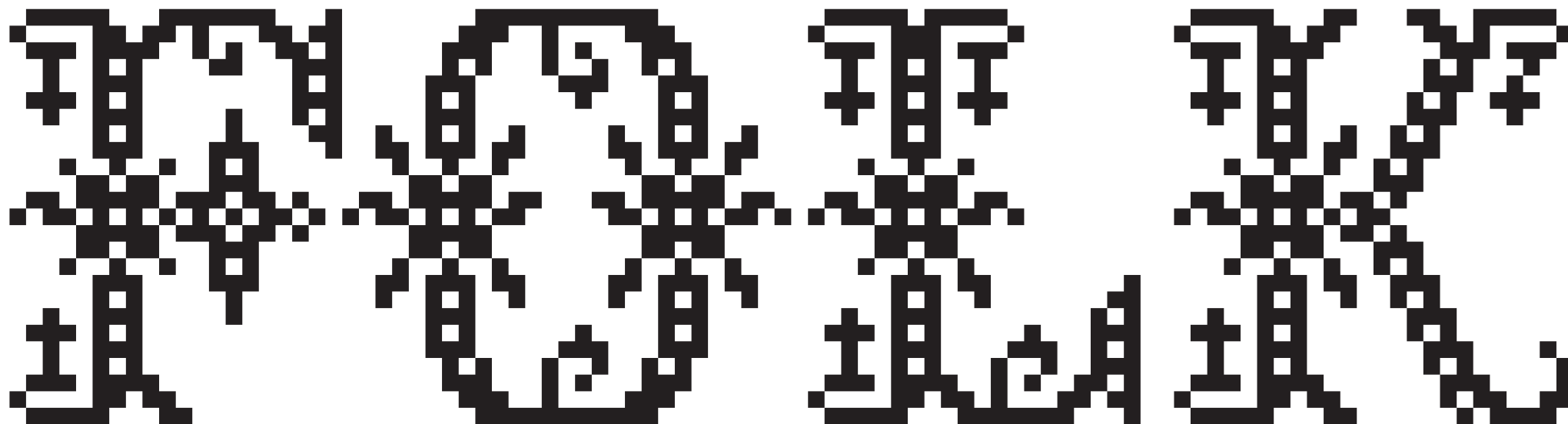


THE LARGEST BIRD
 IN THE UNITED STA
 TES IS THE CALIFO
 RNIA VULTURE, OR
 CONDOR, WHICH ME
 ASURES FROM TIP T
 O TIP OF ITS WINGS
 NINE FEET AND A H
 ALF AT THE OTHER
 END OF THE SCALE
 ARE THE HUMMING
 BIRD, ONE KIND OF
 WHICH, HAS WINGS
 THAT ARE LESS TH

A WEBSITE CAN DEMAND
 A POW TOKEN IN EXCHAN
 GE FOR SERVICE. REQUER
 ING A POW TOKEN FROM
 USERS WOULD INHIBIT F
 RIVOLOUS OR EXCESSIVE
 USE OF THE SERVICE, SPA
 RING THE SERVICE'S UN

THE STANDARD OF LENGTH WHICH HAD GENERALL
 Y BEEN ACCEPTED AS THE STANDARD, WAS A BRAS
 S SCALE 82 INCHES LONG, PREPARED BY TROUGHT
 ON FOR THE COAST SURVEY OF THE UNITED STATE
 S. THE YARD USED WAS THE 36 INCHES BETWEEN T
 HE 27TH AND 63D INCH OF THE SCALE. IN 1856, HO
 WEVER "BRONZE NO 11" WAS PRESENTED TO THE U
 NITED STATES BY THE BRITISH GOVERNMENT. THIS
 IS A DUPLICATE OF THE NO. 1 BRONZE MENTIONED
 BEFORE, WHICH IS THE LEGALIZED STANDARD YAR
 D IN ENGLAND. IT IS STANDARD LENGTH AT 61.79 D
 EGREES F, AND IS THE ACCEPTED STANDARD IN TH
 E UNITED STATES. A BAR OF LOW MOOR IRON, NO. 5
 7, WAS SENT AT THE SAME TIME, AND THIS IS CORR
 ECT IN LENGTH AT 62.58 DEGREES F. THE EXPANSIO
 N OF BRONZE NO. 11 IS 0.000342 INCH, AND THAT O

Limerick Square | 300 pt



Limerick Square | 206 pt



Limerick Square | 120 pt

MADAM AND AMANDA
MADAM AND AMANDA
MADAM AND AMANDA
MADAM AND AMANDA
MADAM AND AMANDA
MADAM AND AMANDA
MADAM AND AMANDA

MADAM AND AMANDA
MADAM AND AMANDA
MADAM AND AMANDA
MADAM AND AMANDA
MADAM AND AMANDA
MADAM AND AMANDA
MADAM AND AMANDA
MADAM AND AMANDA
MADAM AND AMANDA
MADAM AND AMANDA

Limerick Square | 60 pt

WISDOM AND KNOWLEDGE
WISDOM AND KNOWLEDGE
WISDOM AND KNOWLEDGE
WISDOM AND KNOWLEDGE
WISDOM AND KNOWLEDGE
WISDOM AND KNOWLEDGE
WISDOM AND KNOWLEDGE

WISDOM AND KNOWLEDGE
WISDOM AND KNOWLEDGE
WISDOM AND KNOWLEDGE
WISDOM AND KNOWLEDGE
WISDOM AND KNOWLEDGE
WISDOM AND KNOWLEDGE
WISDOM AND KNOWLEDGE

WISDOM AND KNOWLEDGE
WISDOM AND KNOWLEDGE
WISDOM AND KNOWLEDGE
WISDOM AND KNOWLEDGE
WISDOM AND KNOWLEDGE
WISDOM AND KNOWLEDGE
WISDOM AND KNOWLEDGE
WISDOM AND KNOWLEDGE
WISDOM AND KNOWLEDGE
WISDOM AND KNOWLEDGE

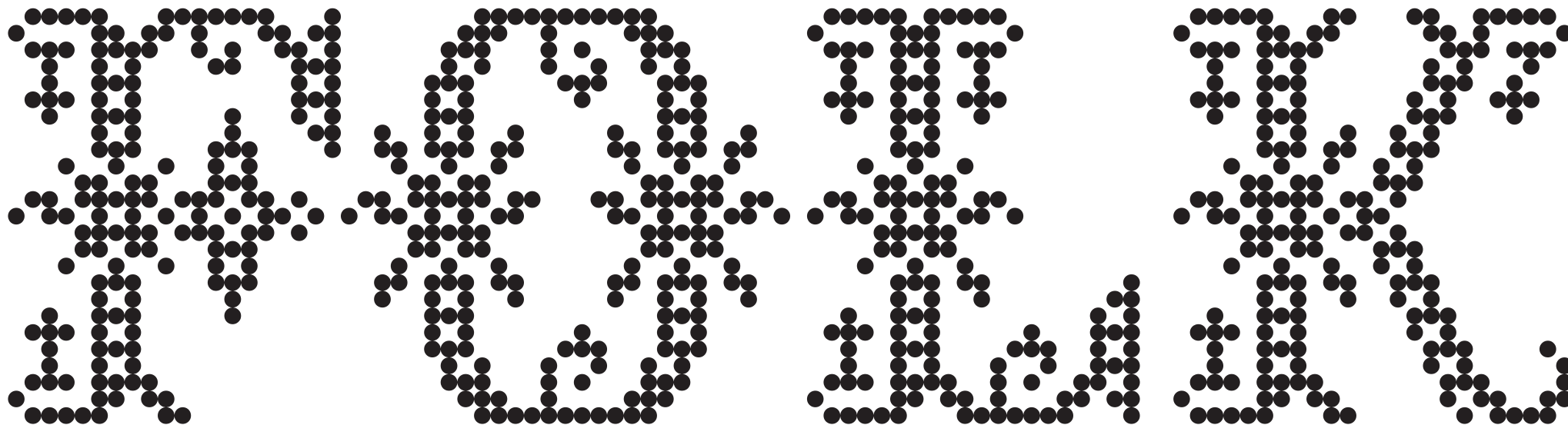
WISDOM AND KNOWLEDGE
WISDOM AND KNOWLEDGE
WISDOM AND KNOWLEDGE
WISDOM AND KNOWLEDGE
WISDOM AND KNOWLEDGE
WISDOM AND KNOWLEDGE
WISDOM AND KNOWLEDGE
WISDOM AND KNOWLEDGE
WISDOM AND KNOWLEDGE
WISDOM AND KNOWLEDGE
WISDOM AND KNOWLEDGE
WISDOM AND KNOWLEDGE

THE LARGEST BIRD
 IN THE UNITED STA
 TES IS THE CALIFO
 RNIA VULTURE, OR
 CONDOR, WHICH ME
 ASURES FROM TIP T
 O TIP OF ITS WINGS
 NINE FEET AND A H
 ALF AT THE OTHER
 END OF THE SCALE
 ARE THE HUMMING
 BIRD, ONE KIND OF
 WHICH, HAS WINGS
 THAT ARE LESS TH

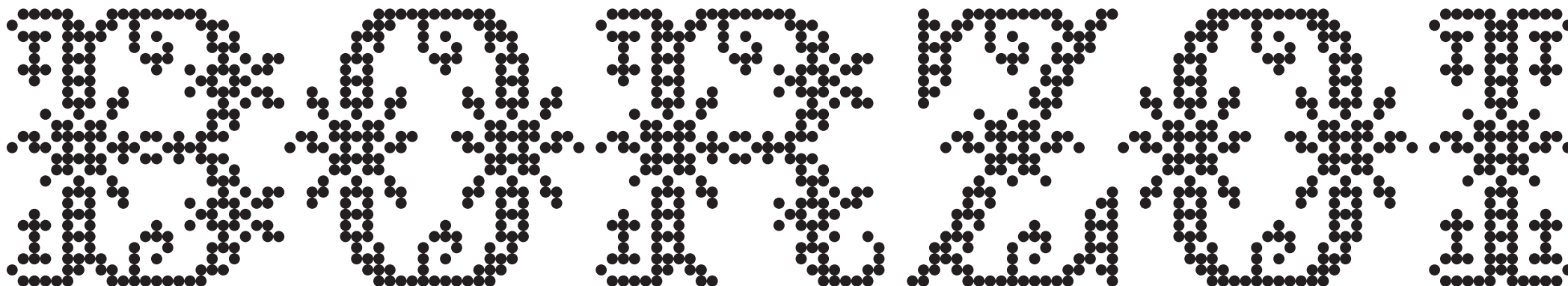
A WEBSITE CAN DEMAND
 A POW TOKEN IN EXCHAN
 GE FOR SERVICE. REQUER
 ING A POW TOKEN FROM
 USERS WOULD INHIBIT F
 REVOLUS OR EXCESSIVE
 USE OF THE SERVICE, SPA
 RING THE SERVICE'S UN

THE STANDARD OF LENGTH WHICH HAD GENERALL
 Y BEEN ACCEPTED AS THE STANDARD, WAS A BRAS
 S SCALE 82 INCHES LONG, PREPARED BY TROUGHT
 ON FOR THE COAST SURVEY OF THE UNITED STATE
 S. THE YARD USED WAS THE 36 INCHES BETWEEN T
 HE 27TH AND 63D INCH OF THE SCALE. IN 1856, HO
 WEVER "BRONZE NO 11" WAS PRESENTED TO THE U
 NITED STATES BY THE BRITISH GOVERNMENT. THIS
 IS A DUPLICATE OF THE NO. 1 BRONZE MENTIONED
 BEFORE, WHICH IS THE LEGALIZED STANDARD YAR
 D IN ENGLAND. IT IS STANDARD LENGTH AT 61.79 D
 EGREES F, AND IS THE ACCEPTED STANDARD IN TH
 E UNITED STATES. A BAR OF LOW MOOR IRON, NO. 5
 7, WAS SENT AT THE SAME TIME, AND THIS IS CORR
 ECT IN LENGTH AT 62.58 DEGREES F. THE EXPANSIO
 N OF BRONZE NO. 11 IS 0.000342 INCH, AND THAT O

Limerick Circle | 300 pt



Limerick Circle | 206 pt



Limerick Circle | 120 pt

THESE ARE THE BEST OF US
THESE ARE THE BEST OF US
THESE ARE THE BEST OF US
THESE ARE THE BEST OF US
THESE ARE THE BEST OF US
THESE ARE THE BEST OF US
THESE ARE THE BEST OF US
THESE ARE THE BEST OF US

THESE ARE THE BEST OF US
THESE ARE THE BEST OF US
THESE ARE THE BEST OF US
THESE ARE THE BEST OF US
THESE ARE THE BEST OF US
THESE ARE THE BEST OF US
THESE ARE THE BEST OF US
THESE ARE THE BEST OF US
THESE ARE THE BEST OF US
THESE ARE THE BEST OF US

Limerick Circle | 60 pt

WE SEE THEM AT ANY
WE SEE THEM AT ANY
WE SEE THEM AT ANY
WE SEE THEM AT ANY
WE SEE THEM AT ANY
WE SEE THEM AT ANY
WE SEE THEM AT ANY
WE SEE THEM AT ANY

POINTELLER WIFE
POINTELLER WIFE
POINTELLER WIFE
POINTELLER WIFE
POINTELLER WIFE
POINTELLER WIFE
POINTELLER WIFE
POINTELLER WIFE

MARRIAGE IS THE BEST OF US
MARRIAGE IS THE BEST OF US
MARRIAGE IS THE BEST OF US
MARRIAGE IS THE BEST OF US
MARRIAGE IS THE BEST OF US
MARRIAGE IS THE BEST OF US
MARRIAGE IS THE BEST OF US
MARRIAGE IS THE BEST OF US

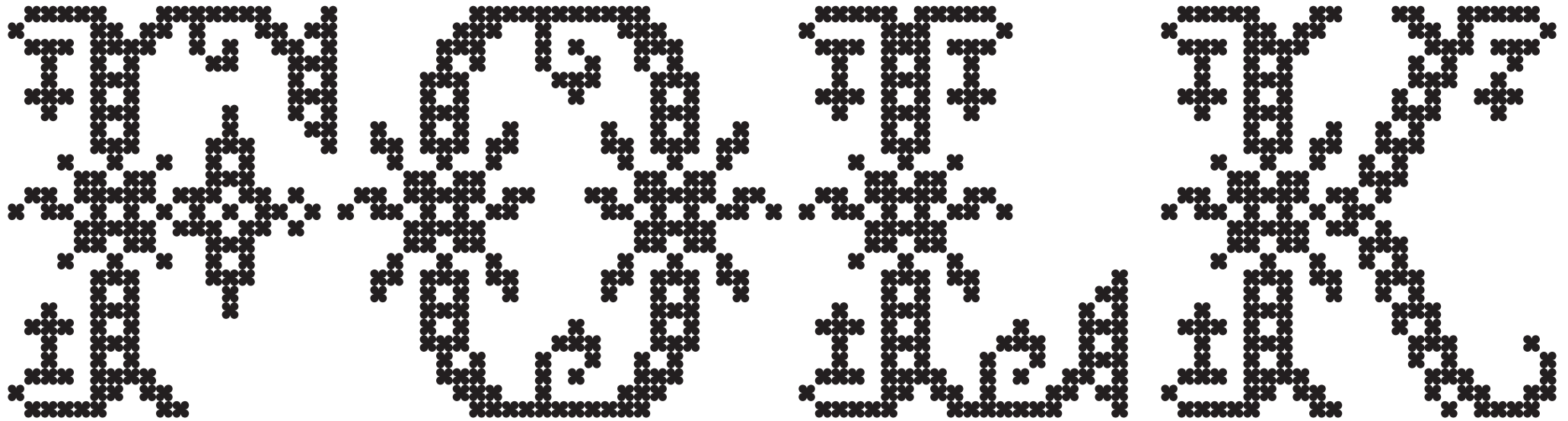
ARRIVED SOME OF
ARRIVED SOME OF
ARRIVED SOME OF
ARRIVED SOME OF
ARRIVED SOME OF
ARRIVED SOME OF
ARRIVED SOME OF
ARRIVED SOME OF

THE LARGEST BIRD
 IN THE UNITED STA
 TES IS THE CALIFO
 RNIA VULTURE, OR
 CONDOR, WHICH ME
 ASURES FROM TIP T
 O TIP OF ITS WINGS
 NINE FEET AND A H
 ALF AT THE OTHER
 END OF THE SCALE
 ARE THE HUMMING
 BIRD, ONE KIND OF
 WHICH, HAS WINGS
 THAT ARE LESS TH

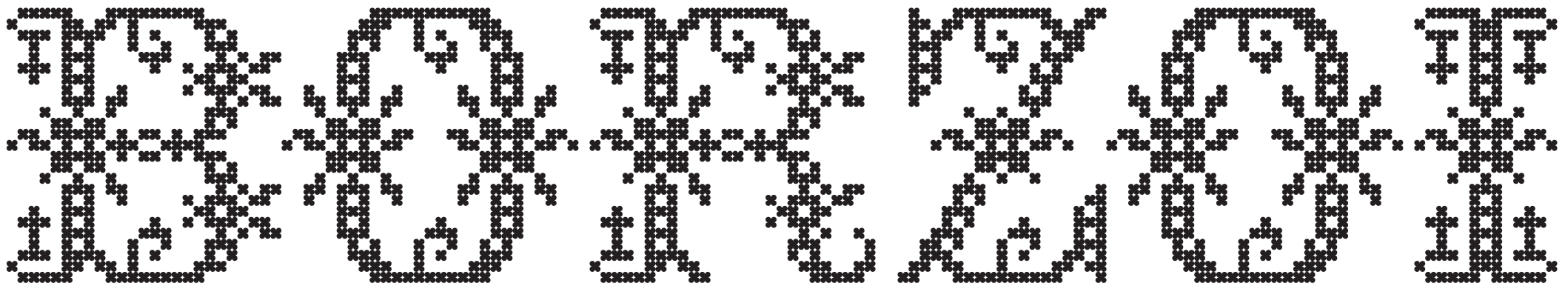
A WEBSITE CAN DEMAND
 A POW TOKEN IN EXCHAN
 GE FOR SERVICE. REQUER
 ING A POW TOKEN FROM
 USERS WOULD INHIBIT F
 RIVOLOUS OR EXCESSIVE
 USE OF THE SERVICE, SPA
 RING THE SERVICE'S UN

THE STANDARD OF LENGTH WHICH HAD GENERALL
 Y BEEN ACCEPTED AS THE STANDARD, WAS A BRAS
 S SCALE 82 INCHES LONG, PREPARED BY TROUGHT
 ON FOR THE COAST SURVEY OF THE UNITED STATE
 S. THE YARD USED WAS THE 36 INCHES BETWEEN T
 HE 27TH AND 63D INCH OF THE SCALE. IN 1856, HO
 WEVER "BRONZE NO 11" WAS PRESENTED TO THE U
 NITED STATES BY THE BRITISH GOVERNMENT. THIS
 IS A DUPLICATE OF THE NO. 1 BRONZE MENTIONED
 BEFORE, WHICH IS THE LEGALIZED STANDARD YAR
 D IN ENGLAND. IT IS STANDARD LENGTH AT 61.79 D
 EGREES F, AND IS THE ACCEPTED STANDARD IN TH
 E UNITED STATES. A BAR OF LOW MOOR IRON, NO. 5
 7, WAS SENT AT THE SAME TIME, AND THIS IS CORR
 ECT IN LENGTH AT 62.58 DEGREES F. THE EXPANSIO
 N OF BRONZE NO. 11 IS 0.000342 INCH, AND THAT O

Limerick Flower | 300 pt



Limerick Flower | 206 pt



Limerick Flower | 120 pt

THE MAN WHO WENT TO THE
FARM TO GET THE
MILK AND THE
COWS WERE
MILKING THE
COWS AND THE
COWS WERE
MILKING THE

THE MAN WHO WENT TO THE
FARM TO GET THE
MILK AND THE
COWS WERE
MILKING THE
COWS AND THE
COWS WERE
MILKING THE

Limerick Flower | 60 pt

WAS THE
SUN
THE
MAY
THE

POINT
THE
WAS THE

THE
THE
THE
THE
THE

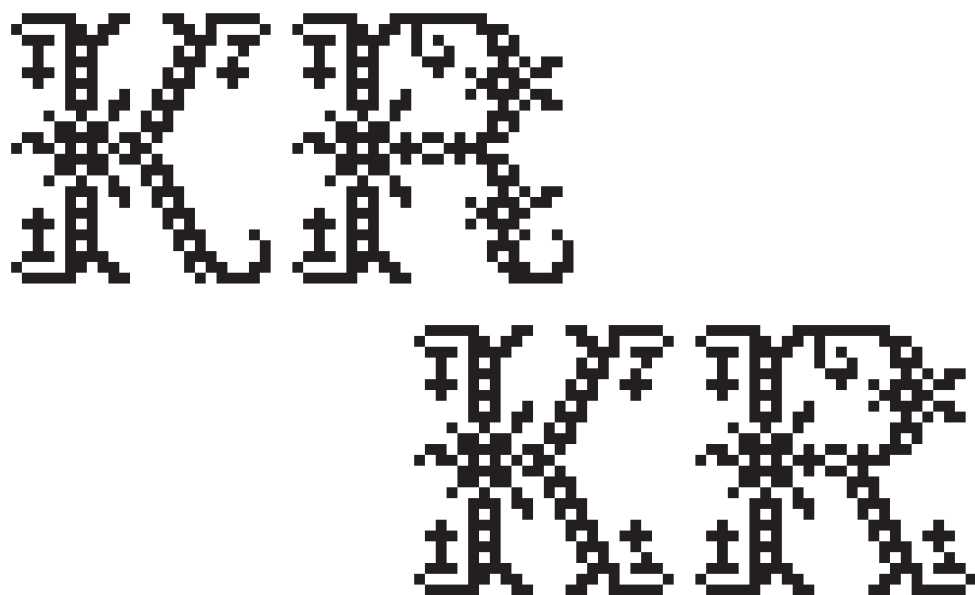
THE
THE
THE
THE
THE
THE
THE
THE
THE

THE LARGEST BIRD
 IN THE UNITED STA
 TES IS THE CALIFO
 RNIA VULTURE, OR
 CONDOR, WHICH ME
 ASURES FROM TIP T
 O TIP OF ITS WINGS
 NINE FEET AND A H
 ALF AT THE OTHER
 END OF THE SCALE
 ARE THE HUMMING
 BIRD, ONE KIND OF
 WHICH, HAS WINGS
 THAT ARE LESS TH

A WEBSITE CAN DEMAND
 A POW TOKEN IN EXCHAN
 GE FOR SERVICE. REQUER
 ING A POW TOKEN FROM
 USERS WOULD INHIBIT F
 RIVOLOUS OR EXCESSIVE
 USE OF THE SERVICE, SPA
 RING THE SERVICE'S UN

THE STANDARD OF LENGTH WHICH HAD GENERALL
 Y BEEN ACCEPTED AS THE STANDARD, WAS A BRAS
 S SCALE 82 INCHES LONG, PREPARED BY TROUGHT
 ON FOR THE COAST SURVEY OF THE UNITED STATE
 S. THE YARD USED WAS THE 36 INCHES BETWEEN T
 HE 27TH AND 63D INCH OF THE SCALE. IN 1856, HO
 WEVER "BRONZE N° 11" WAS PRESENTED TO THE U
 NITED STATES BY THE BRITISH GOVERNMENT. THIS
 IS A DUPLICATE OF THE NO. 1 BRONZE MENTIONED
 BEFORE, WHICH IS THE LEGALIZED STANDARD YAR
 D IN ENGLAND. IT IS STANDARD LENGTH AT 61.79 D
 EGREES F., AND IS THE ACCEPTED STANDARD IN TH
 E UNITED STATES. A BAR OF LOW MOOR IRON, NO. 5
 7, WAS SENT AT THE SAME TIME, AND THIS IS CORR
 ECT IN LENGTH AT 62.58 DEGREES F. THE EXPANSIO
 N OF BRONZE NO. 11 IS 0.000342 INCH, AND THAT O

Alternates



THE TIME CAN NO LONGER
 BE MEANINGFULLY BE DEFINED
 BY THE INDICATION
 ON IDENTICAL CLOCKS AT
 REST, NOR BY THE LAW GOVERNING
 THE PROPAGATION OF LIGHT.
 GENERALIZING, WE ARRIVE AT THE

BY EXAMINING THE
 RUINS OF THE ANCIENTS
 IT HAS BEEN FOUND THAT THE
 HAD STANDARD MEASUREMENTS,
 IN THE SENSE IN WHICH WE
 ARE NOW TO CONSIDER THEM,
 BUT THE RUINS SHOW THAT THE
 BUILDINGS WERE CONSTRUCTED
 ACCORDING TO SOME REGU-

Superiors / Superscripts → sups

H⁰1²3⁴5⁶7⁸9 H⁰1²3⁴5⁶7⁸9

Inferiors / Subscripts → subs

H₀1₂3₄5₆7₈9 H₀1₂3₄5₆7₈9

Fraction → frac

1/2 3/4 85/607 ½ ¾ 85/607

Proportional Figures → pnum

0123456789 0123456789

Tabular Figures → tnum

0123456789 0123456789

Dotted Zero → zero

10,000.00 10,000.00
10/03/2020 10/03/2020

Ordinals → ordn

N^o3 N^o5 N^o3 N^o5
1st 2^o 1st 2^o

Contextual Alternates → calt

→ ← ↔ → ← ↔
^v iv ^iv ↑ ↓ ↕
03:67 50x80 03:67 50x80
49-62 49-62
OBJECTS OBJECTS
EPSILON EPSILON
29 28 68 38 29 28 68 38

Discretionary Ligatures → dlig

WWW.HEM.FR WWW.HEM.FR
{C}H E{R} M{P} CH E^o M^o

Stylistic Set 01

→ Circled Figures

Stylistic Set 07

→ Alternate four closed

01 GARDEN

00 GARDEN

14 APRIL 1984

14 APRIL 1984

Stylistic Set 02

→ Negative Circled Figures

Stylistic Set 08

→ Alternate hyphen ornamented

23 LIBRARY

23 LIBRARY

BACK-SLIDE

BACK-SLIDE

Stylistic Set 03

→ Framed Figures

45 ROOFTOP

45 ROOFTOP

Stylistic Set 04

→ Negative Framed Figures

67 KITCHEN

67 KITCHEN

Stylistic Set 05

→ Straight legged K R

FRANK RICK

FRANK RICK

Stylistic Set 06

→ Alternate ampersand

BED & BREAK

BED & BREAK

Glyphset

Inferiors

0 1 2 3 4 5 6 7 8 9

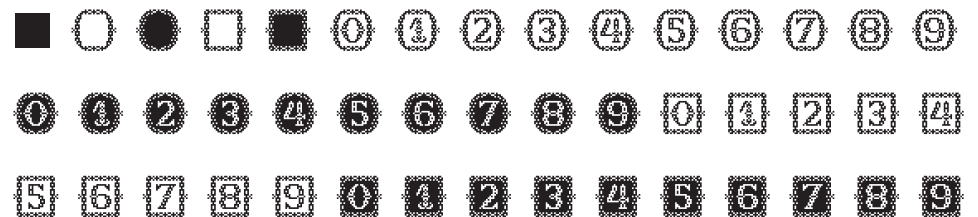
Arrows



Numerators

0 1 2 3 4 5 6 7 8 9

Other Symbols



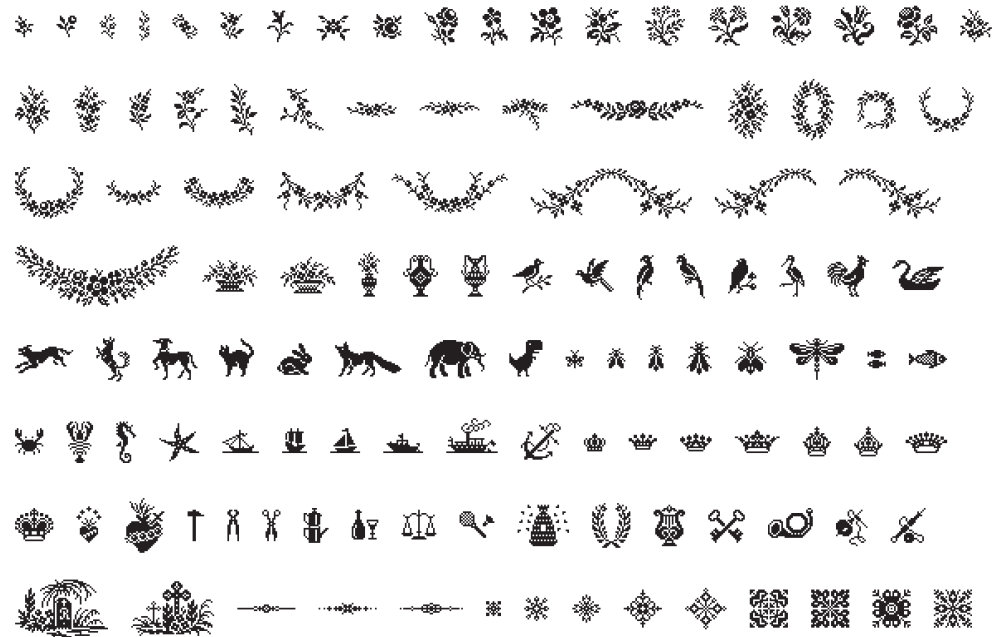
Denominators

0 1 2 3 4 5 6 7 8 9

Ornaments

Fractions

0/0 0/∞ 1/2 1/3 2/3 1/4 3/4 1/8 3/8 5/8 7/8



Currencies

€ \$ ¢ £ ¥ ₮ ⱶ

Mathematical Symbols

+ - ± × ÷ = ≠ ~ ≈ ^ < > ≤ ≥ → • ◊ ○

About Limerick

PoW Limerick is a pixel font deriving from the ABCs cross-stitch charts. At the crossroads of traditional craft and technology, its letter structures are composed of variable pixels, giving each variation a special texture. PoW Limerick is an all-caps font enhanced by a full set of vignettes.

Behind its naive look hides a total revised version of past century's alphabet. This display typeface is completed and extended with a set of accents, numerals, punctuation, math symbols, and arrows. PoW Limerick is heavily ornamented with multiple combinations of ornaments and vignettes that will take you back to the rich cross-stitch universe.

PoW Limerick Family consists of 8 styles, each with a different pixel shape: Clover, Mosaic, Star, Lozenge, Octogone, Square, Circle and Flower. It also comes as a Variable Font, where you can switch from one pixel shape to another.

Designer

Fanny Hamelin

Release date

September 2023

Font production

Léo Guibert, Fanny Hamelin

Design date

2022

Font Version

1.0 (September 2023)

Specimen Version

1.0 (September 2023)

Glyphs

523 Roman

Styles

Limerick Clover
 Limerick Mosaic
 Limerick Star
 Limerick Lozenge
 Limerick Octogone
 Limerick Square
 Limerick Circle
 Limerick Flower

Limerick Variable (containing
 all the aforementioned styles)

OpenType features

[aalt] Access All Alternates
 [locl] Localized Forms
 [ccmp] Glyph Composition / Decomposition
 [numr] Numerators
 [dnom] Denominators
 [frac] Fractions
 [sup] Superiors / Superscripts
 [sub] Inferiors / Subscripts
 [sinf] Scientific Inferiors
 [pnum] Proportional Figures
 [tnum] Tabular Figures
 [zero] Slashed Zero
 [ordn] Ordinals
 [calt] Contextual Alternates
 [dlig] Discretionary Ligatures

[ss01] Circled figures 0-9
 [ss02] Negative Circled figures 0-9
 [ss03] Framed figures 0-9
 [ss04] Negative Framed figures 0-9
 [ss05] Straight legged K R
 [ss06] Alternate ampersand
 [ss07] Alternate four closed
 [ss08] Alternate hyphen ornamented

Charset

Latin Extended-A

Languages covered

Abenaki, Acheron, Achinese, Acholi, Achuar-Shiwiar, Afar, Afrikaans, Aguaruna, Albanian, Tosk Albanian, Alekano, Alsatian, Amahuaca, Amara, Amis, Anaang, Andaandi / Dongolawi, Anuta, Ao Naga, Apinayé, Aragonese, Arbëreshë Albanian, Arrernte, Arvanitic (Latin), Ashéninka Perené, Asturian, Atayal, Asu (Tanzania), Aymara, Central Aymara, Southern Aymara, Balinese (Latin), Bari, Bashkir (Latin), Basque, Batak Dairi (Latin), Batak Karo (Latin), Batak Mandailing (Latin), Batak Simalungun (Latin), Batak Toba (Latin), Belarusian (Latin), Bemba, Bena (Tanzania), Bikol, Bini, Bislama, Bosnian, Breton, Candoshi-Shapra, Caquinte, Caribbean Hindustani (Latin), Cashibo-Cacataibo, Cashinahua, Catalan, Cebuano, Chachi, Chamorro, Chavacano, Chickasaw, Chiga, Chiltepec Chinantec, Ojtlán Chinantec, Chokwe, Chuukese, Cimbric, Cofán, Cornish, Corsican, Creek, Crimean Tatar (Latin), Croatian, Czech, Danish, Dehu, Delaware, Dholuo, Dimli, Dutch, Efik, Embu, English, Ese Ejja, Estonian, Faroese, Fijian, Filipino, Finnish, French, Frisian, Friulian, Gagauz (Latin), Galician, Ganda, Garifuna, Ga'anda, German, Gilbertese, Gooniyandi, Guadeloupean Creole, Gusii, Gwich'in, Haitian Creole, Hän, Hani, Hawaiian, Hiligaynon, Hopi, Hotçak (Latin), Huastec, Hungarian, Icelandic, Ido, Igbo, Ilocano, Indonesian, Interglossa, Interlingua, Irish, Istro-Romanian, Italian, Ixcatlán Mazatec, Jamaican, Japanese (Latin), Javanese (Latin), Jèrriais, Jola-Fonyi, K'iche', Kabuverdianu, Kaingang, Kala Lagaw Ya, Kalaallisut (Latin), Kalenjin, Kamba (Kenya), Kaonde, Kaqchikel, Karakalpak (Latin), Karelian (Latin), Kashubian, Kekchí, Kenzi / Mattokki (Latin), Khasi, Kikongo, Kikuyu, Kimbundu, Kinyarwanda, Kirmanjki, Kituba (DRC), Klingon, Kölsch, Kongo, Konzo, Kuanyama, Kurdish (Latin), Northern Kurdish, Central Kurdish (Latin), Kven Finnish, Ladin, Ladino (Latin), Latgalian, Latin, Latvian, Ligurian, Lithuanian, Lojban, Lombard, Low Saxon, Luba-Lulua, Luxembourgish, Maasai, Macedo-Romanian, Makhuwa, Makhuwa-Meetto, Makonde, Malagasy, Malaysian, Maltese, Mandinka, Mankanya, Manx, Maore Comorian, Māori, Mapudungun, Marquesan, Marshallese, Matsés, Mauritian Creole, Megleno-Romanian, Meriam Mir, Meru, Minangkabau, Mirandese, Mohawk, Moldovan, Montagnais, Montenegrin, Munsee, Murrinh-Patha, Mwani, Mískito, Naga Pidgin, Nahuatl, North Ndebele, South Ndebele, Ndonga, Neapolitan, Ngazidja Comorian (Latin), Niuean, Nobiin (Latin), Nomatsiguenga, Noongar, Norwegian, Novial, Nyanja, Nyankole, Occidental, Occitan, Orma, Afaan Oromo, Borana-Arsi-Guji Oromo, Eastern Oromo, Oroqen, Ossetian (Latin), Palauan, Paluan, Pampanga, Papantla Totonac, Papiamentu, Picard, Pichis Ashéninka, Piedmontese, Pijin, Pintupi-Luritja, Pipil, Pohnpeian, Polish, Portuguese, Potawatomi, Purepecha, Páez, Quechua, Northern Qiandong Miao, Southern Qiandong Miao, Rarotongan, Romanian, Romansh, Rotokas, Rundi, Rwa, Samburu, Inari Sami, Lule Sami, Northern Sami, Southern Sami, Samoan, Sango, Sangu (Tanzania), Saramaccan, Sardinian, Scottish Gaelic, Sena, Serbian (Latin), Seri, Seselwa Creole, Shambala, Shawnee, Shipibo-Conibo, Shona, Shuar, Sicilian, Silesian, Slovak, Slovenian, Soga, Somali, Soninke, Lower Sorbian, Upper Sorbian, Northern Sotho, Southern Sotho, Spanish, Sranan Tongo, Standard Malay (Latin), Sundanese (Latin), Swahili, Congo Swahili, Swati, Swedish, Swiss German, Tagalog, Tahitian, Taita, Tedim Chin, Tetum, Tetun Dili, Tiv, Toba, Tok Pisin, Tokelau, Tonga (Islands), Tonga (Zambia), Tsonga, Tswana, Tumbuka, Turkish, Turkmen (Latin), Tuvaluan, Tzeltal, Tzotzil, Uab Meto, Umbundu, Upper Guinea Crioulo, Uzbek (Latin), Northern Uzbek, Venetian, Veps, Volapük, Vöro, Wallisian, Walloon, Walser, Wangaaybuwan-Ngiyambaa, Waorani, Waray-Waray, Warlpiri, Wayuu, Welsh, Wik-Mungkan, Wiradjuri, Wolof, Xavánte, Xhosa, Yanésha', Yao, Yapese, Yindjibarndi, Yucateco, Záparo, Zapotec, Zulu, Zuni

Demo License

This License allows you to create test documents, visuals or web pages to evaluate the Font in the context of your own work.

Desktop License

This License allows you to use the Font to design all kind of images and documents, for print and static web usage.

About Proof of Words

Proof of Words is a digital type foundry established in 2023 by Léo Guibert and Fanny Hamelin between Helsinki and Paris. Our type design practice is driven by our careful attention to details and our love for unconventional design and typographic curiosity. While we are constantly expanding our retail catalogue, we are also offering a range of type-related services.

Web License

This License allows you to display the Font on a website, regardless of the terminal used (phone, tablet, computer).

Social License

This License allows you to use the Font to design and display images or videos for social medias.

Proof of Words is born out of the many print proofs that have been exchanged between us over the past years. It started in our classroom, and then we kept this habit of sharing our ongoing work and providing each other support and advice. Gradually, the idea came up to have a space of our own on the internet where we could publish the results of our collaboration. We consider Proof of Words as a meeting point to publish our typefaces or research and invite other type designers to collaborate!

Logotype License

This License allows you to modify the outlines of the previously vectorized Font to create logotypes and wordmarks.

App License

This License allows you to embed the Font in a software or mobile application to style dynamic, static or editable texts.

Contact

www.proof-of-words.com
mail@proof-of-words.com
@proof_of_words_typefaces

ePub License

This License allows you to embed the Font in electronic publications, online, offline or on e-readers.

Other Licenses

Proof of Words also offers Broadcast and Video Licensing, Merchandising Licensing and Video game Licensing on demand.

Any Political or Religious use requires the written consent of Proof of Words, granted at its sole discretion.

For companies bigger than 200 employees, or any of the described above, please contact us directly and we will offer you a custom solution adapted to your requirements or to help you with any question.